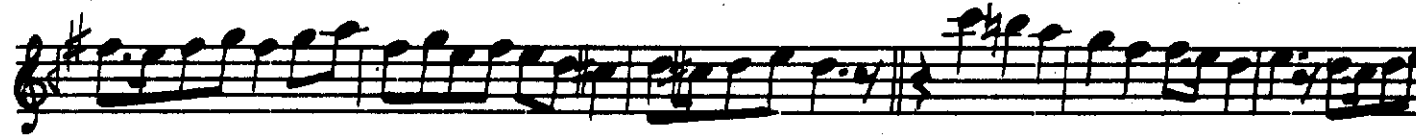
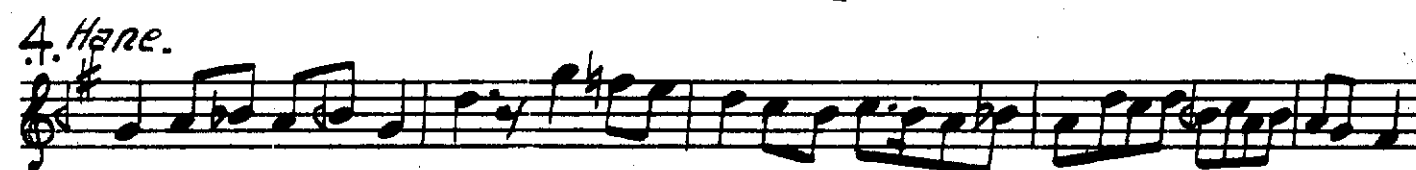


28

2. Hane.

The image displays a musical score for a piece titled "NEVA PEŞREVİ" by Zeki Mehmed Ağa. The score is written in G major (one sharp) and 2/4 time. It consists of 28 measures, with the first measure marked with the number "28". The notation is in a single staff, featuring various musical symbols such as treble clef, key signature, time signature, and various note values (quarter, eighth, and sixteenth notes). The score is divided into two systems, with the second system starting at measure 14 and marked "2. Hane.". The notation includes various musical symbols such as treble clef, key signature, time signature, and various note values (quarter, eighth, and sixteenth notes). The score is divided into two systems, with the second system starting at measure 14 and marked "2. Hane.". The notation includes various musical symbols such as treble clef, key signature, time signature, and various note values (quarter, eighth, and sixteenth notes).



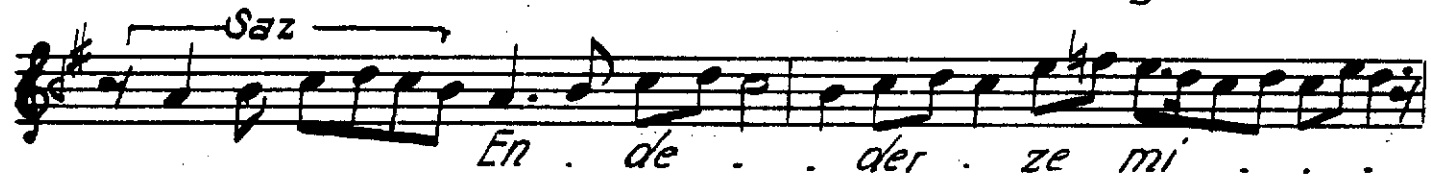
Ey te celli gâ hı ca nem rû yî tû . . .
 hey yi hey hey yâr yâ ri yâ ri men . . .
 üey di' lem ra mey li kü l li sū yî tû . . .
 hey yi hey hey yâr yâ ri yâ ri men . . .
 Sad he za ran ca nû dî l a vî h te . . .
 hey yi hey hey yâ yâ ri yâ ri men . . .
 di' dem ey dî l be ri yek ta mu yî tû . . .
 hey yi hey hey yâr yâ ri yâ ri men . . .
 Hur si di si pî h ri lâ me kâ . . .
 nî di lî mast hey yi hey hey yâ
 yâ ri yâ ri men Key . hû s re vû mil . . .
 ki di lû câ nî di lî mast . . .

hey yi hey hey yâr yâr i yâ ri men
 Tâ . der . . di li mâ . . aş . . ki tû men .
 zil ker . dest hey yi hey hey yâr
 yâ ri ya ri men . Ser . çeş . . . mei a
 bi zinde gâ ni . . . di li mast
 hey yi hey hey yâr yâr i yâ ri men
 A fe rin ey ma hi rû ber
 Tu ti i câ nem be sūd hay
 cā ni tû ber ce ma li
 ra ni rû zar şe ker han
 bi ha dū ya ni tû
 di le bi han ni tû
 ber ce ma li bi ha dū ya ni tû
 zan şe ker han di le bi han ni tû
 Ey yi rû yi tû nev be ha ri han dan
 Ey yi şeh ri ci han ta rab bi tû
 Ah . sen . te . ze . hi . ni . gâ . ri . han . dan .
 Ey . hus . re . vü . şeh . ri . yâ . ri . han . dan .



Kinci Selâm

Evfer.



ah . . der . . kâ . . kâ ni ma' . . .

ma' . . . ni kân tû yi . . .

Ah . . . cen net tû yi
Ah . . . sa ki tû yi

yi . . . ser bet tû yi
yi . . . rid van tû yi

ah . . . ba . a ki ez . . .

ez dūn . ya . ya . . . me gū . . .

gū vez mi . . . mil ke ti . . .

ah uk . ba . ba me gū . . .

ah cūz . na haz re ti . . .

ti Mev . lā lā me gū . .

ah mi . gū gū ki i . . .

i nū . an tû yi . . .

Terennüm.



Devrikebir

Üçüncü Selâm



es sa lā be li

yā . ri . men . . . dost Şem si . teb . . ri

. . . zi . . . zi ba . . . lā . . . yi . . . fe . lek

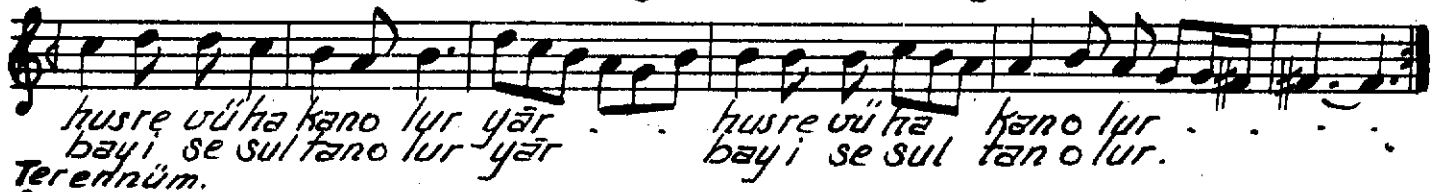
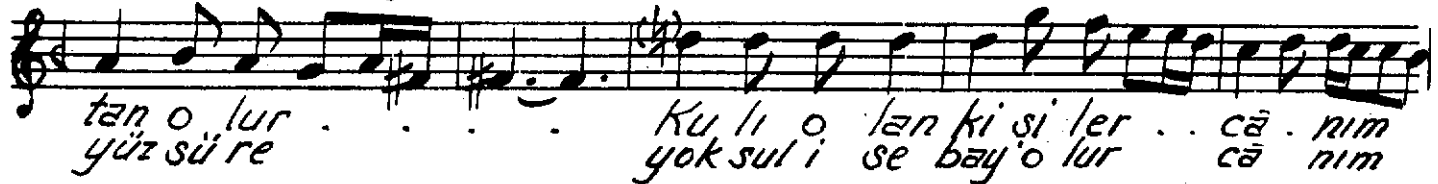
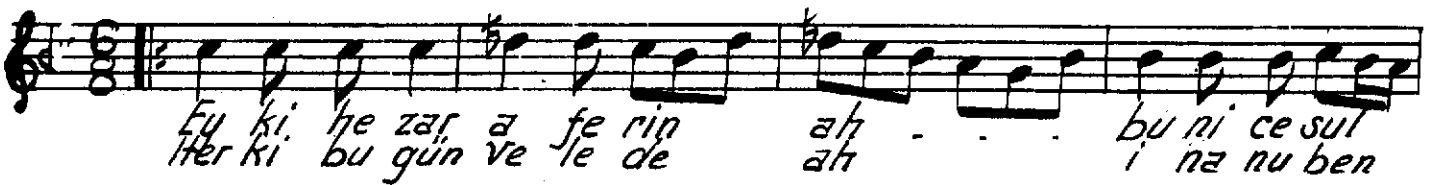
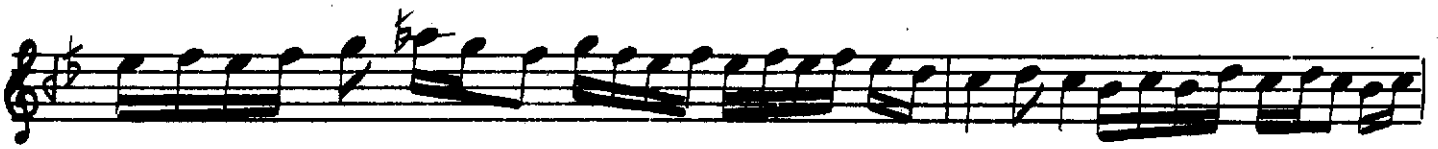
. be li yā . ri . men . . .

. Her ze ma ni . . . mi

. . . ke . şed han es sa lā

40
hey yi hey yā rim

Terennüm.



za men bül bü li gül za re mü der da mı tū za rem . men

bül bü li gül za re mü der da mı tū ze rem Ez çist a ceb

ba tū me ra in he me sev da yar . . .

yar . . . in he me sev da dost dost . .

in he me sev da Ey rü yi tū Kible i ci ha

nî di li men . . . vān der dü ci han em nū e mā

nî di li men . . . vān der dü ci han em nū e mā

nî di li men . . . Hem ca nū te ni vū hem tū ca

nî di li men . . . Ey gev heri der ya yı ni ha

nî di li men . . . ey gev he ri der

ya yı ni ha nî di li men . . .

Ah tū mā hi a ci bi ki mis li ne da ri

Be her cil ve can ra der a teş . si pa ri yâr . .

yâr . . yâr ah . . be zül fey . ni eb ru

be çeş ma . ni a ha fe yi dil rû ba yi

çû si ri . si kâ ri yâr . . yâr yâr

ah me hü hur gu lâ met ze bun keş tû ra met .

me hü hur gu lâ met ze bun keş tû ra met dü â lem

be da met . ci zi ba ni gâ ri yâr . yâr . .

yâr ah na zi ret ne di dem . ne ez kes si ni dem

di lû di nî bür di . . ci ay yâ . ri yâ ri yâr . .

yâr . . yâr ah . . ve led ra ci ba şed şe ha ker .

zi rah met zi sil ki gu lâ ma ni hî şed .

şû ma ri yâr . . yâr . . yâr

Dördüncü Selâm.

Eyfer.

Ah sul ta ni me ni

ni sul ta ni me ni

ah en der di lü can

can i ma ni meni

ah der men bi de mi

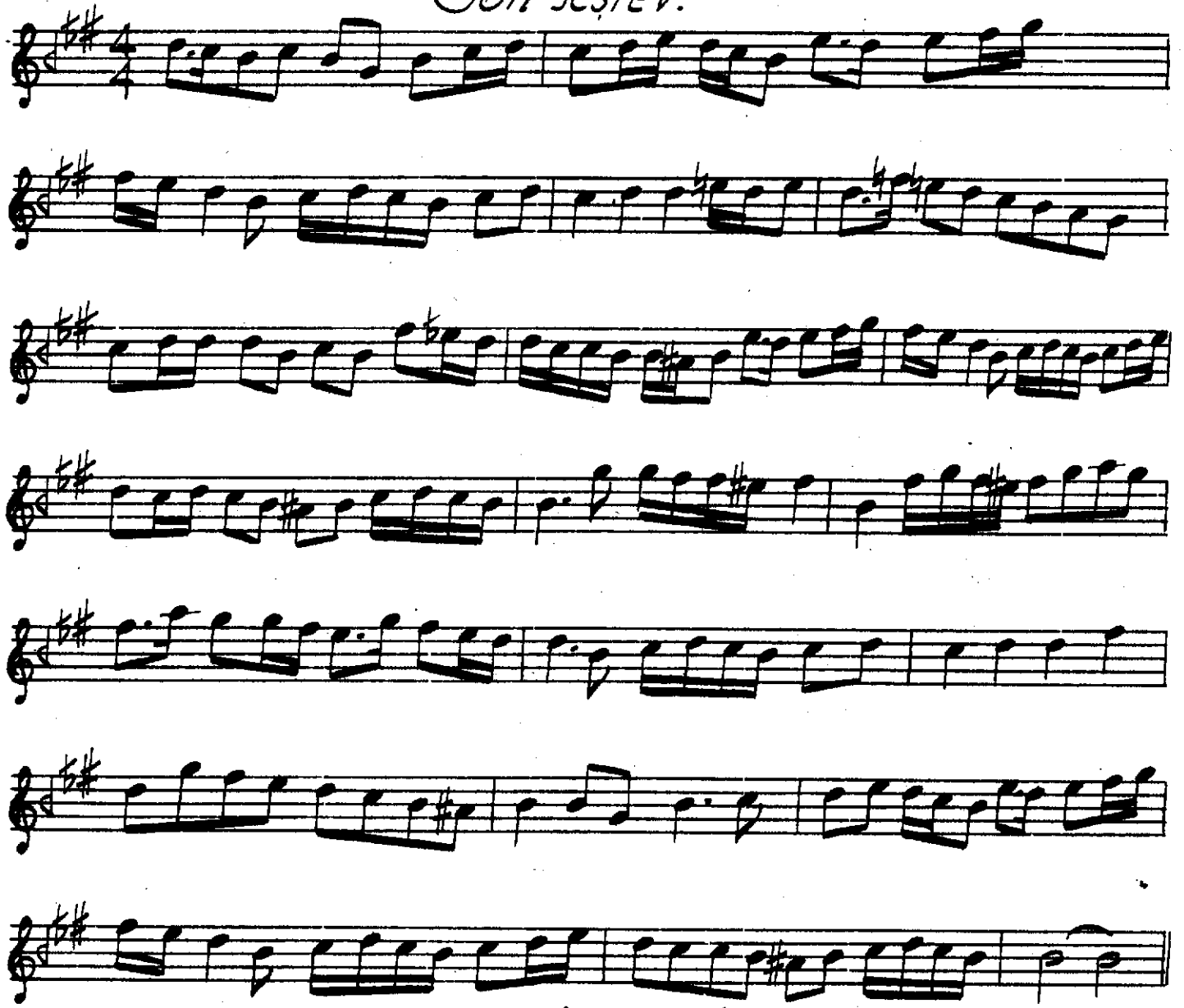
mi men zin de se vem

ah yek can ci se ved

ved sad ca ni meni

ah i ma ni me ni

Son Beşrev.



Son yürük.

